

## Ras

**Catalog Number:** 21021

**Gene Symbol:** RAS

**Description:** Anti-Ras Rabbit Polyclonal Antibody

**Background:** Small GTPases are a super-family of cellular signaling regulators. Ras belongs to the Ras sub-family of GTPases that regulate cell proliferation, cell motility, and gene transcription. GTP binding increases the activity of Ras, and the hydrolysis of GTP to GDP renders it inactive. GTP hydrolysis is aided by GTPase activating proteins (GAPs), while exchange of GDP for GTP is facilitated by guanine nucleotide exchange factors (GEFs).

**Immunogen:** A synthetic peptide from the C-terminus of Ras

**Tested applications:** ELISA, WB, IHC

**Recommended dilutions:**

ELISA 1:100-1:5000

WB 1:100-1:2000

IHC 1:100-1:1000

**Concentration:** 0.2 mg/ml

**Host:** Rabbit

**Clonality:** Polyclonal

**Purity:** Purified from serum

**Format:** Liquid

**Storage buffer:**

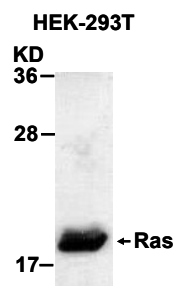
Preservative: no

Constituents: PBS (without  $Mg^{2+}$  and  $Ca^{2+}$ ), pH 7.4, 150 mM NaCl, 50% glycerol

**Species Reactivity:** Ras antibody recognizes H-Ras, N-Ras and K-Ras from vertebrates.

**Storage Conditions:** Store at  $-20^{\circ}C$ . Avoid freeze / thaw cycles

### Western blot:



HEK-293T whole-cell lysate was used for Western blot with anti-Ras polyclonal antibody (cat # 21021).